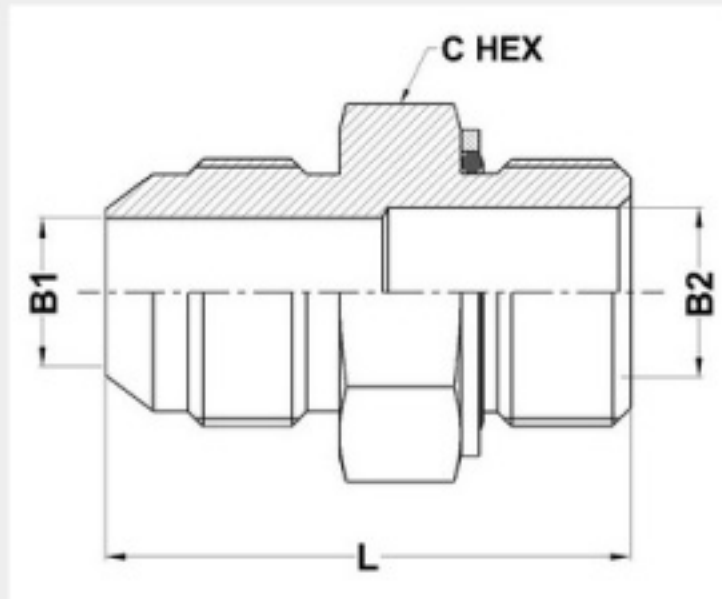


INTERNATIONAL FITTINGS

MJ-MMORR
7001 SERIES



ORIENT ENGINEERING WORKS



PART NO.SIZE	TUBE O.D.	B1 JIC	B2 THREAD	B1 DRILL	B2 DRILL	L LGTH	C HEX
7001-04-10	1/4	7/16-20	M10 x 1	4.4	4.5	27.5	16.0
7001-04-12	1/4	7/16-20	M12 x 1.5	4.4	6.0	33.0	19.0
7001-04-14	1/4	7/16-20	M14 x 1.5	4.4	7.5	33.0	19.0
7001-05-12	5/16	1/2-20	M12 x 1.5	6.0	6.0	33.0	19.0
7001-06-14	3/8	9/16-18	M14 x 1.5	7.5	7.5	33.1	19.0
7001-06-16	3/8	9/16-18	M16 x 1.5	7.5	9.0	34.6	22.0
7001-08-16	1/2	3/4-16	M16 x 1.5	9.9	9.0	37.2	22.0
7001-08-18	1/2	3/4-16	M18 x 1.5	9.9	11.0	37.2	24.0
7001-08-22	1/2	3/4-16	M22 x 1.5	9.9	14.0	40.7	27.0
7001-10-18	5/8	7/8-14	M18 x 1.5	12.3	11.0	39.8	24.0
7001-10-20	5/8	7/8-14	M20 x 1.5	12.3	12.5	40.3	27.0
7001-10-22	5/8	7/8-14	M22 x 1.5	12.3	14.0	43.3	27.0
7001-12-22	3/4	1-1/16-12	M22 x 1.5	15.5	14.0	45.9	27.0
7001-12-27	3/4	1-1/16-12	M27 x 2	15.5	18.0	47.9	32.0