

VALVES



ORIENT ENGINEERING WORKS

GAUGE ISOLATOR - PANEL MOUNTING

Description

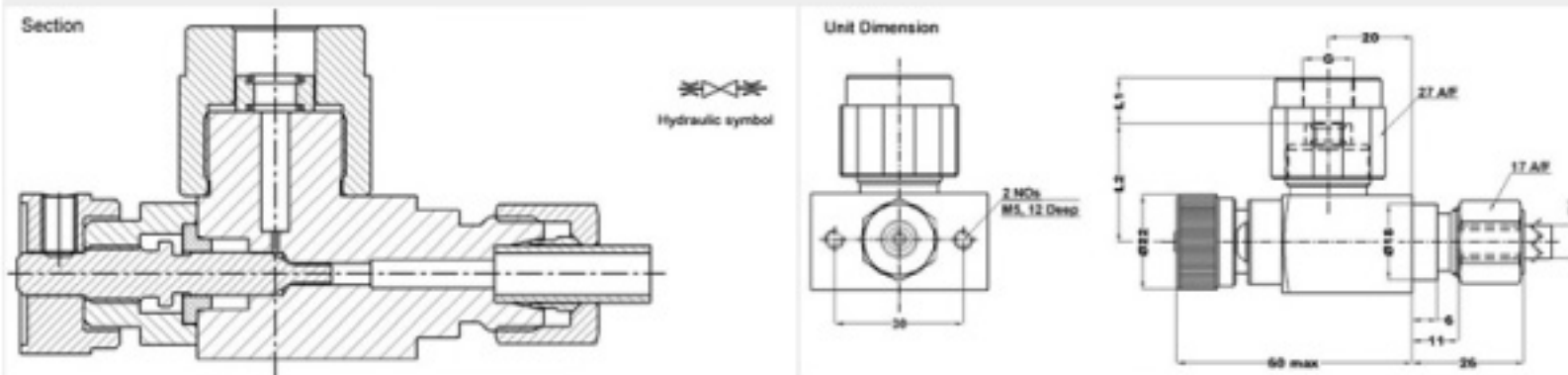
Seal type valve.

Swivelling gauge connection for easy gauge positioning.

Compact assembly.

Eliminates gauge supporting bracket.

Angular gauge face plane in Sub- Plate mounting construction facilitating easy gauge reading.



| Part# | G | L1 | L2 |
|-------------|-------|------|-------|
| GI-PM-G 1/4 | G 1/4 | 10.5 | 27.50 |
| GI-PM-G 3/8 | G 3/8 | 10.5 | 28.00 |
| GI-PM-G 1/2 | G 1/2 | 10.5 | 28.00 |

TECHNICAL SPECIFICATION

CONSTRUCTION---SEAT TYPE

MOUNTING---SUB-PLATE MOUNTING INTERFACE / PANEL MOUNTING (THREADED BODY)

INTERFACE STANDARD---FACTORY STANDARD.

MOUNTING POSITION---OPTIONAL.

OPERATING PRESSURE---350 BAR.

HYDRAULIC MEDIUM---MINERAL OIL.

VISCOSITY RANGE---10 CST TO 380 CST.

FLUID TEMPERATURE RANGE --- -20° C TO +70° C.

FLUID CLEANLINESS REQUIREMENT---AS PER ISO 19/16 OR BETTER.

MASS---0.3 KG.